



# INDOFINE Chemical Company, Inc.

121 Stryker Lane, Bldg. 30, Suite 1 • Hillsborough, NJ 08844 • U.S.A.

Phone: (908) 359-6778 • FAX: (908) 359-1179

website: [www.indofinechemical.com](http://www.indofinechemical.com)

e-mail: [chemical@indofinechemical.com](mailto:chemical@indofinechemical.com)

**Methyl 8(Z),11(Z),14(Z),17(Z)-eicosatetraenoate ( $\omega$ 3-Arachidonic acid methyl ester)**



Amount: 1mg

Solvent: 95% ethanol containing 3  $\mu$ g of butylated hydroxytoluene (BHT).

Volume: 0.1 mL

Cat. no.: 20-2024

Lot no.: LX-320

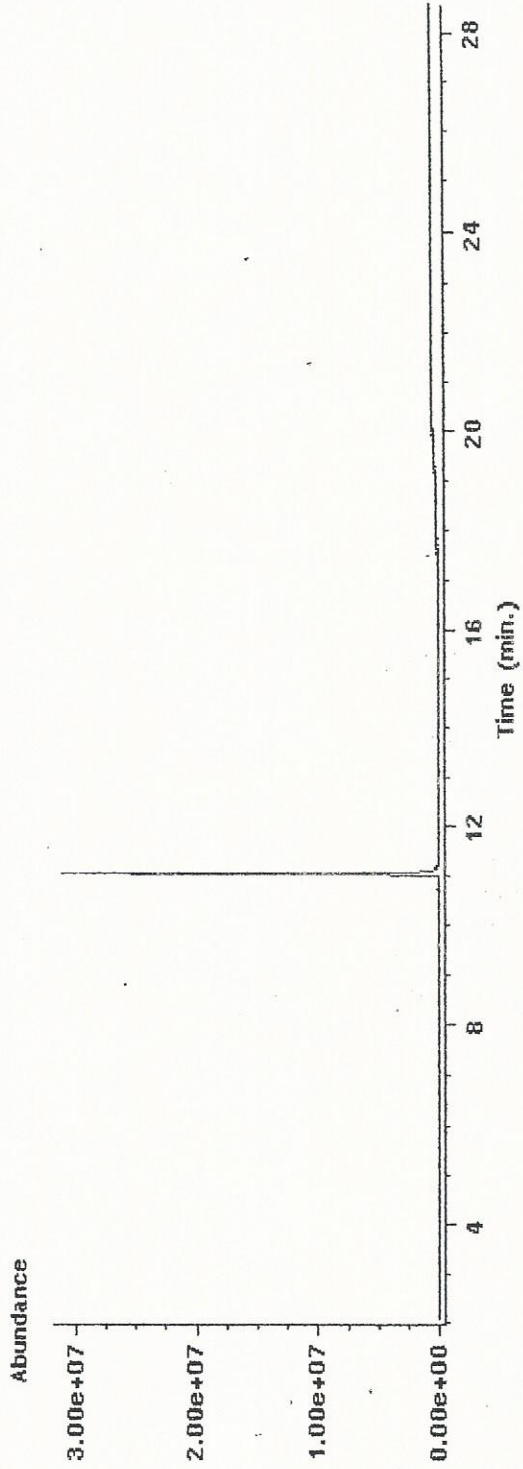
## Identity

The identity of the material is based on its mode of preparation and on its mass spectrum showing a molecular ion at  $m/z$  318 and ions at  $m/z$  289 ( $M^+ - 29$ ; cleavage  $\alpha$  to the  $\omega$ 3 double bond) and 287 ( $M^+ - 31$ ; loss of  $OCH_3$ ) (mass spectrum attached).

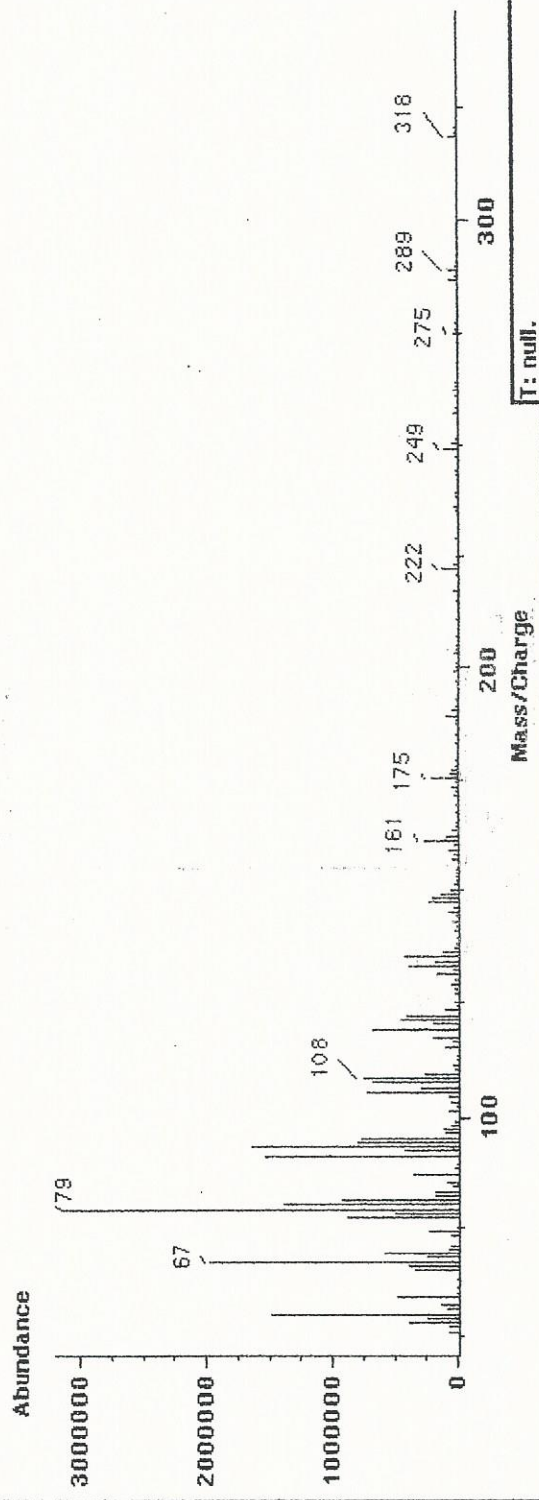
## Purity

98%. The purity was determined by GC-MS analysis using a capillary column of 5% phenylmethylsiloxane (12 m, 0.33  $\mu$ m film thickness; carrier gas, helium). The temperature was raised from 120°C to 320°C at a rate of 10°C/min (GC-MS analysis attached). Analysis by GLC (FID detection) was carried out using a methylsilicone capillary column (25 m, 0.33  $\mu$ m film thickness; carrier gas, helium; oven temperature, 190°C) (chromatogram attached).

TIC of 20-2024.d



Scan 584 (11.072 min) of 20-2024.d



T: null.

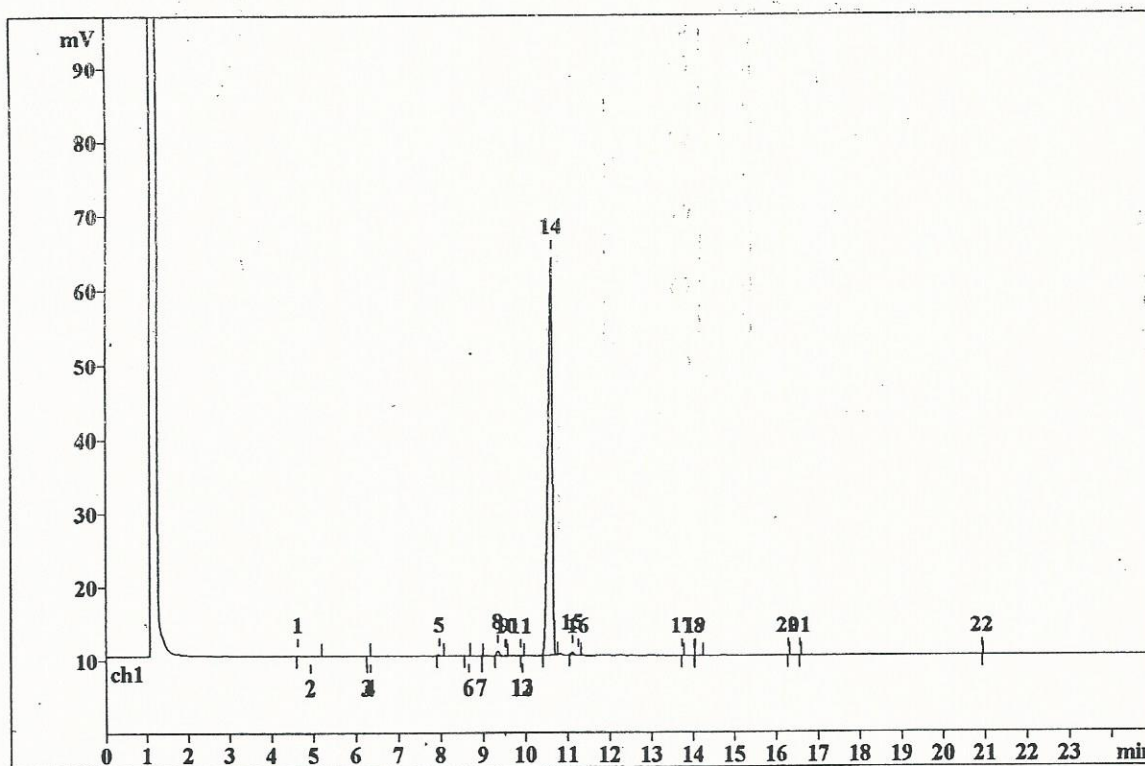
SAMPLE:

Vial number: 1  
Volume: 1.0 µl  
Dilution: 1.00  
Amount: 1.0000

COLUMN:  
Size: 2.0 x 60 mm  
Number:  
Part.size: 5.0 µm

ELUENT:

Flow: 0.50 mL/min  
Temperature: 20.0°C  
Pressure: 2.7 MPa



Quantitation method: Absolute concentration

No	Retention min	Area mV*sec	Area %	Name
1	4.63	0.249	0.07	
2	4.93	-0.090	-0.02	
3	6.25	-0.036	-0.01	
4	6.33	-0.026	-0.01	
5	7.95	0.523	0.14	
6	8.64	-0.282	-0.08	
7	8.97	-0.013	0.00	

8	9.35	3.443	0.92
9	9.51	0.070	0.02
10	9.55	0.054	0.01
11	9.89	0.007	0.00
12	9.91	-0.004	0.00
13	9.93	0.003	0.00
14	10.64	366.345	98.13
15	11.12	1.828	0.49
16	11.26	-0.012	0.00
17	13.73	0.110	0.03
18	14.03	-0.027	-0.01
19	14.05	0.078	0.02
20	16.29	-0.006	0.00
21	16.56	0.061	0.02
22	20.94	-0.033	-0.01
23	26.16	0.040	0.01
<hr/>			
23	30.49	373.340	100.00



SAMPLE:

Vial number: 1  
Volume: 1.0  $\mu$ l  
Dilution: 1.00  
Amount: 1.0000

COLUMN:

Size: 2.0' x 60 mm  
Number:  
Part.size: 5.0  $\mu$ m

ELUENT:

Flow: 0.50 mL/min  
Temperature: 20.0°C  
Pressure: 2.7 MPa

